



A warm welcome back to Class 3 at Corvedale Primary School this Autumn term!

Mr Brough, Mrs Littlar and Miss Ebrey will be teaching Class 3 this term. Mrs Davies, Mrs Smith and Miss Hollins will be supporting the class throughout the week.

Other adults helping us this year will be Mrs Dillon and Mr Croton leading PE on Wednesday & Friday respectively. Mr Bennett providing music sessions on Wednesdays. Father John will lead a Collective Worship assembly regularly on a Thursday.

MORNING ROUTINE CHANGE! Please note that we are now encouraging children to arrive at school for **8:45am** to comply with new government guidelines on the length of the school day. Y6 children enter the building through Classroom 4 and Y5 children enter through Classroom 3. Once children have organised their belongings, they are expected to enter the classroom promptly to begin their early morning activity. Registration will close at **9:00am**.

HOMework

Spellings and Spelling Sheets for the first half term will be sent home. Years 5 and 6 play a Spelling Hive game every Thursday to check on their learning. Some spellings may seem challenging but you can encourage your child to spot the pattern in the letters and to play **Spelling Shed online** for extra practise. Do let the teachers know if you have any concerns.

Reading books are checked and changed regularly at school. Children are encouraged to take books home to complete, as many KS2 books can be quite long! Please continue to comment in your child's Home Reading Book as a form of home/school communication.



Maths - The Key Recall Facts (KIRFs) this half term are Number Bonds, then, after half term, Doubling & Halving. It is important that children know the KIRFs thoroughly and are able to recall them quickly. Maths homework will be given out at the end of each week to be completed and returned either on or before the following Wednesday.



Rewards at School - Children have their own reward chart where they record the "ticks" they earn for actions and attitudes that exemplify behaviour linked to our school values: Respect, Wisdom, Friendship, Endurance, Compassion, Service and Trust. They need to earn 20 ticks to fill a marble and they should aim to complete at least 3 marbles per half-term. Marbles across the school are also counted every half term to see which house wins the House Cup.

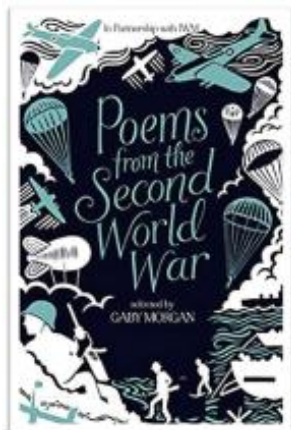
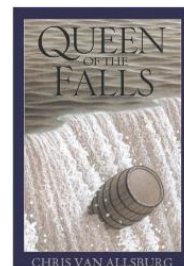
House Activities take place on three Thursday afternoons each term. Children from across all the classes join together in House groups to take part in exciting, themed outdoor

activities. These are led by teachers, provide extra learning opportunities, foster a greater sense of community and, most importantly, are great fun!

The provisional dates for house activities are: Thursday 21st September; Thursday 26th October and Thursday 23rd November.

English - We follow the Literacy Company scheme "Pathways to Write."

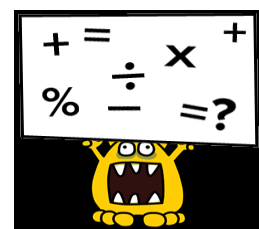
For Years 5 and 6 this term we will be reading **Queen of the Falls** by Chris Van Allsburg. We will be working towards writing a series of imaginative diaries based on the main character's extraordinary life.



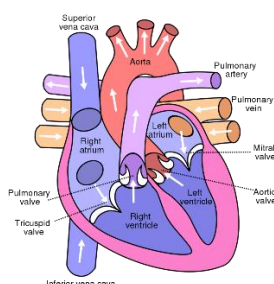
We will follow the "Pathways to Read" scheme on Wednesdays and Fridays, where we study texts in depth and work on answering comprehension questions. This term links with the Year 6 History topic and looks at two texts: **When We Were Warriors** by Emma Carroll and **Poems from the Second World War**, selected by Gaby Morgan. These will also inform our Class Assembly for Remembrance Sunday.

Our new, daily **Language Skills** sessions cover Spellings, Reading, Comprehension and Grammar and Punctuation. Children are placed in targeted groups to meet their individual needs.

Maths - Mr Brough will be teaching maths to Y5 and 6. In Maths this term we start off with statistics, then the focus will be on place value, addition, subtraction, multiplication and division with some fractions later on in the term and some work on shape thrown in for good measure. We use the White Rose Maths Scheme.



Science -



Our Science topic for the Autumn term is the **Circulatory System**. On Thursday afternoons we will be learning all about the wonders of the heart, lungs and associated blood vessels, incorporating some fun experiments and practical activities into our learning.

History - Year 6 will be studying WW2. Firstly the Battle of Britain then, after half term, researching more locally on "the Homefront." A visit to RAF Cosford is planned.

Year 5 are heading into Ancient Rome, looking at the growth of the Empire and then assessing the legacy of the Roman invasion of Britain. We will take a trip to Wroxeter Roman city, near Shrewsbury, to bring our learning to life.



Art - Y6 will begin with a project on fashion design which we didn't have time for last year. Later they will be creating 3D figures from 2D drawings using scaling up techniques. Y5 will explore storytelling through drawing - a project on illustration - and then exploring pattern.

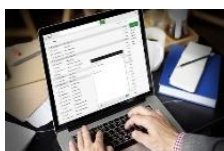
DT - We start this project in October when the children will be exploring bridges. They will find out about frame structures especially girders, designing and making their own bridges for specific purposes using card.

RE - This term Years 5 & 6 will be asking the question, "Why is the Torah so important to Jewish people?" Later in the term, we turn to studying Christianity and ask, "Was Jesus the Messiah?"

PSHE - Our topics this term are "Families and friendships" followed by "Money, aspirations and careers" after half term.

French - Our studies this term will focus on Weather and then Transport. We will learn key vocabulary and then build our understanding of grammar to form sentences both verbally and in writing.

P.E. This term the children will be having PE lessons on Wednesdays and Fridays. Please ensure your child has a PE kit available at school every day. Please **name** all kit and send in a note or email if your child is unable to take part.



Thank you for taking the time to read through this information. We are here to support you whenever we can.

Please keep in touch via the email addresses below:

holly.littlar1@corvedaleprimary.co.uk

jenny.ebrey@corvedaleprimary.co.uk

jonathan.brough@corvedaleprimary.co.uk